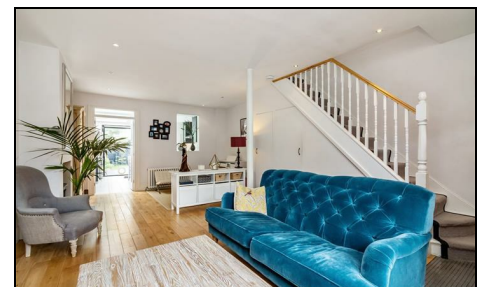


Hardy Road Wimbledon, SW19 1HZ

£950,000 Freehold



A stunning, three double bedroom, Victorian family home located within the highly sought after Battles area, being within easy reach of both Northern Line and mainline stations, Wimbledon town centre and excellent local schools. On the ground floor is a spacious through reception room with feature fireplace which leads into a stunning open-planned kitchen/dining area with floor to ceiling doors that open out to a lovely garden. Upstairs are two double bedrooms, a modern family bathroom whilst the master bedroom with en-suite is in the converted loft, all done to a great specification. Houses in Battles of this quality are rare at present so an early viewing is recommended.

Hardy Road, SW19
 Approximate Gross Internal Area = 108.5 sq m / 1168 sq ft
 (Including Eaves Storage)
 Shed = 3.8 sq m / 41 sq ft
 Total = 112.3 sq m / 1209 sq ft

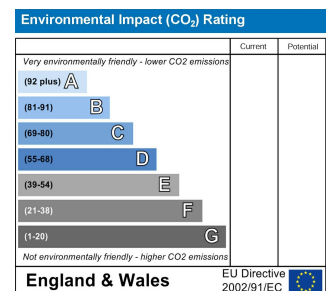
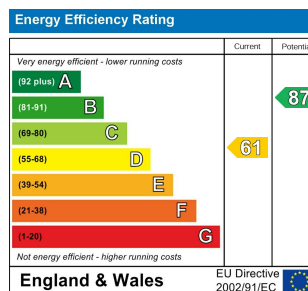


Ground Floor **First Floor**

This floor plan is for representation purposes only and is not drawn to scale.
 The Gross Internal Area includes outbuildings shown on the plan.
 Whilst every attempt has been made to ensure the accuracy of the plan measurements of doors, windows and rooms are approximate only and should be checked before making any decisions reliant upon them.
 Copyright Bespokeplans.co.uk (ID863206)



- Sought After Battles Location
- Fantastic Condition
- Open-Planned Kitchen Area
- Three Double Bedrooms
- Great Master Bedroom with En-Suite
- Close to Northern Line
- Close to Sought After Local Schools
- Current EPC Rating - D
- Council Tax Band E



For Free Mortgage Quote and Best Mortgage Rates, call an Ellisons Mortgage Advisor on 020 8944 9494



Although these particulars are believed to be correct, their accuracy is not guaranteed and they do not form part of any contract.

Celebrating 30 years of successful Sales and Lettings in Merton

